

kab1-2

Current Data Parameters  
NAME kab1-2  
EXPNO 1  
PROCNO 1

F2 - Acquisition Parameters  
Date\_ 20120410  
Time 16.06  
INSTRUM spect  
PROBHD 5 mm PABBO BB-  
PULPROG zg  
TD 65536  
SOLVENT CDCl3  
NS 1  
DS 0  
SWH 10000.000 Hz  
FIDRES 0.152588 Hz  
AQ 3.2768500 sec  
RG 26.37  
DW 50.000 usec  
DE 6.50 usec  
TE 300.0 K  
D1 2.00000000 sec

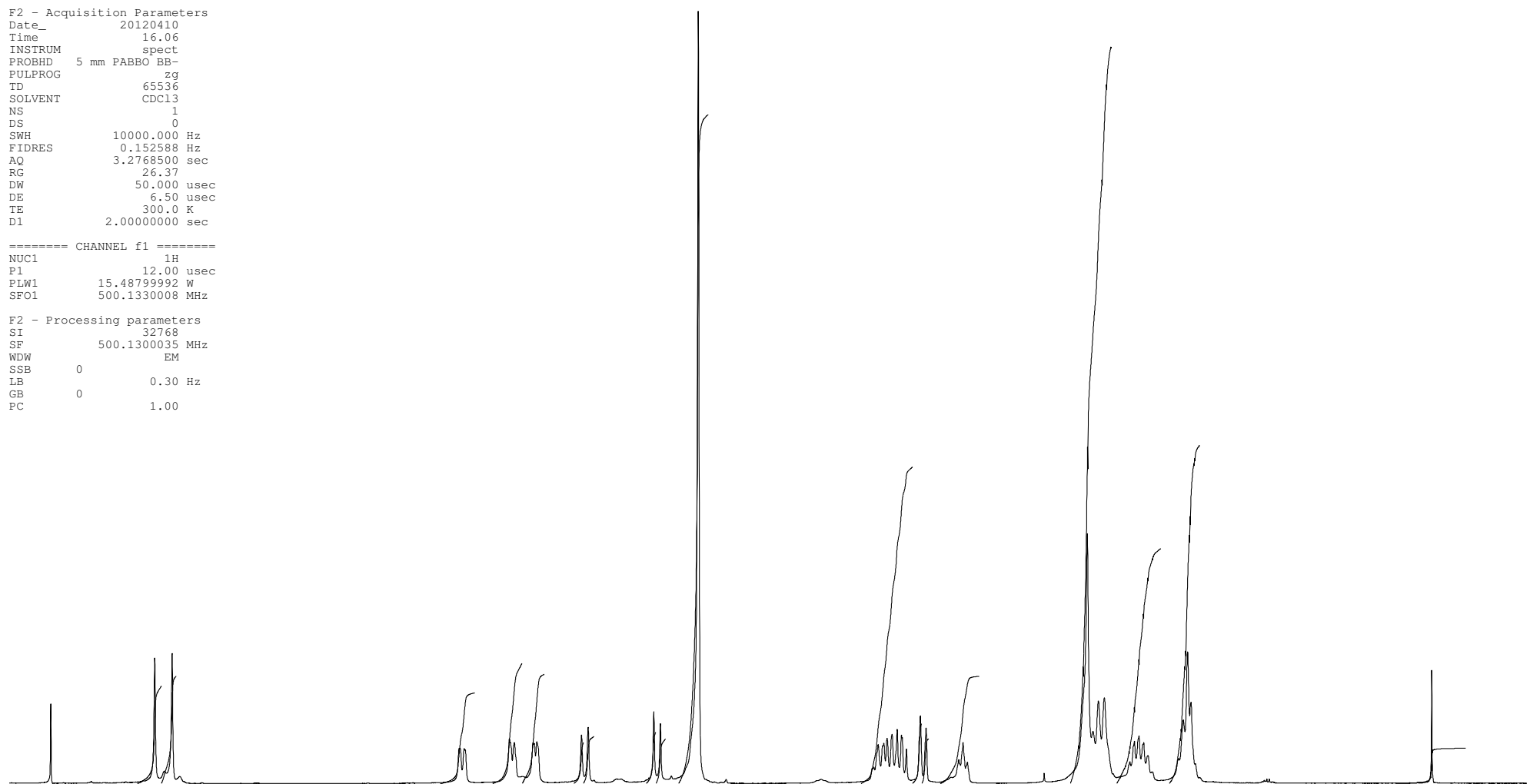
----- CHANNEL f1 -----  
NUC1 1H  
P1 12.00 usec  
PLW1 15.48799992 W  
SFO1 500.1330008 MHz

F2 - Processing parameters  
SI 32768  
SF 500.1300035 MHz  
WDW EM  
SSB 0  
LB 0.30 Hz  
GB 0  
PC 1.00

5.1276  
5.1225  
5.1011  
5.0959  
4.8626  
4.8369  
4.7385  
4.7322  
4.7180  
4.4827  
4.4479  
4.1016  
4.0668  
3.8674

2.9187  
2.8952  
2.8889  
2.8720  
2.8453  
2.8182  
2.7960  
2.7919  
2.7699  
2.6964  
2.6663  
2.4943  
2.4714  
2.4485  
1.8162  
1.7860  
1.7577  
1.7264  
1.5677  
1.5436  
1.5189  
1.4964  
1.3343  
1.3097  
1.2873  
1.2693

0.0002



7.0 6.5 6.0 5.5 5.0 4.5 4.0 3.5 3.0 2.5 2.0 1.5 1.0 0.5 0.0 ppm

0.95  
1.05

0.88

1.17  
1.06

0.40  
0.46

0.50  
0.44  
6.52

3.09  
0.58  
0.44  
1.05

7.18  
2.29  
3.30

0.34