

mnr8-2

7.319
7.088
6.805
6.788
6.726
6.715
6.712
6.566

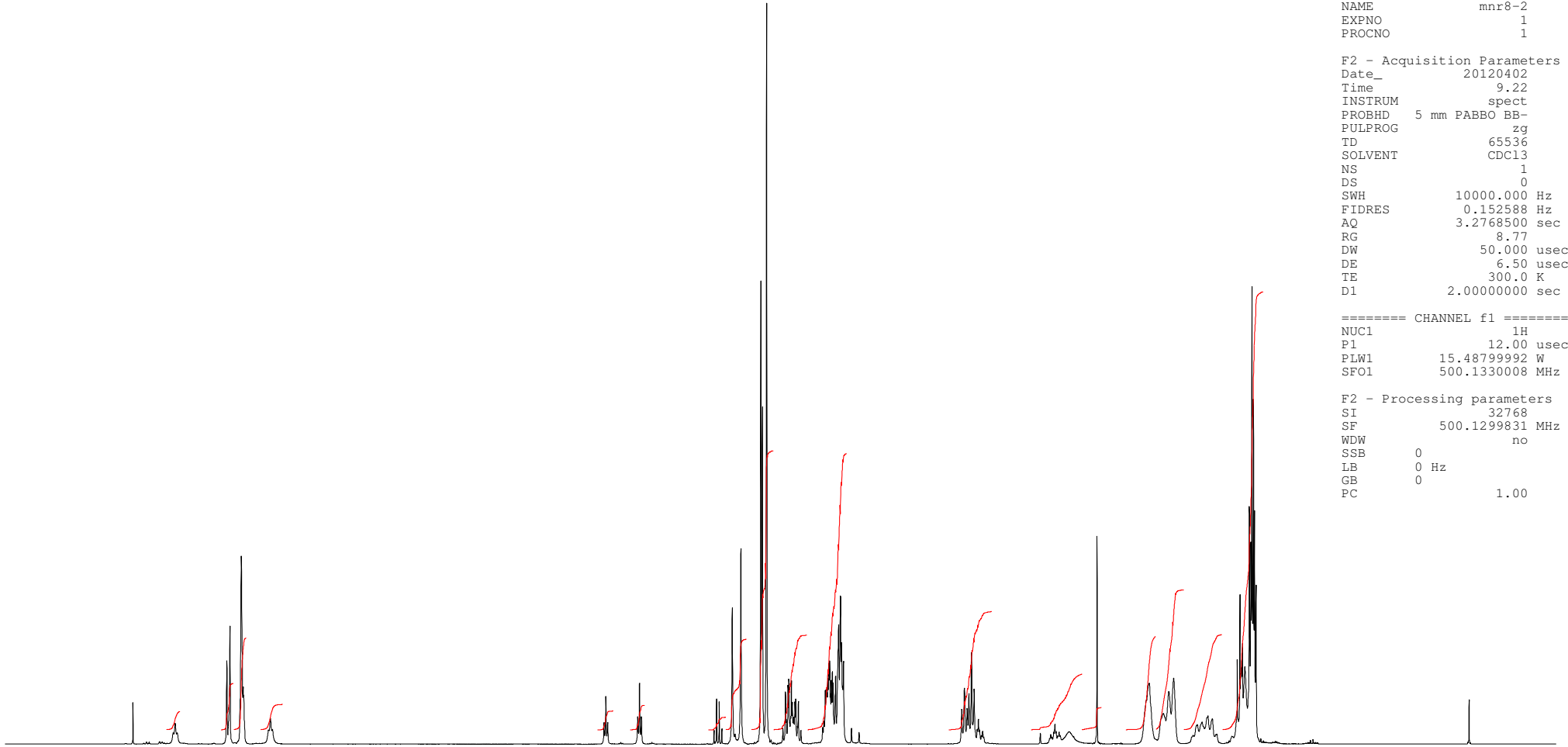
4.730
4.545
4.123
4.109
4.037
3.990
3.881
3.872
3.849
3.746
3.732
3.727
3.713
3.509
3.503
3.454
3.444
2.726
2.276
2.269
2.263
2.246
2.038
1.752
1.619
1.431
1.407
1.270
1.256
1.241
1.190

Current Data Parameters
NAME mnr8-2
EXPNO 1
PROCNO 1

F2 - Acquisition Parameters
Date_ 20120402
Time 9.22
INSTRUM spect
PROBHD 5 mm PABBO BB-
PULPROG zg
TD 65536
SOLVENT CDCl3
NS 1
DS 0
SWH 10000.000 Hz
FIDRES 0.152588 Hz
AQ 3.2768500 sec
RG 8.77
DW 50.000 usec
DE 6.50 usec
TE 300.0 K
D1 2.00000000 sec

==== CHANNEL f1 =====
NUC1 1H
P1 12.00 usec
PLW1 15.48799992 W
SFO1 500.1330008 MHz

F2 - Processing parameters
SI 32768
SF 500.1299831 MHz
WDW no
SSB 0
LB 0 Hz
GB 0
PC 1.00



7.5 7.0 6.5 6.0 5.5 5.0 4.5 4.0 3.5 3.0 2.5 2.0 1.5 1.0 0.5 0.0 ppm

0.40
1.03
2.04
0.56
0.41
0.54
0.28
2.01
6.19
2.10
6.13
2.62
1.24
0.49
2.07
3.10
2.11
9.72

---0.001