

mnr20-10

7.949  
7.916  
7.891  
7.887  
7.635  
7.605  
7.468  
7.445  
7.440  
7.318  
7.294  
7.259

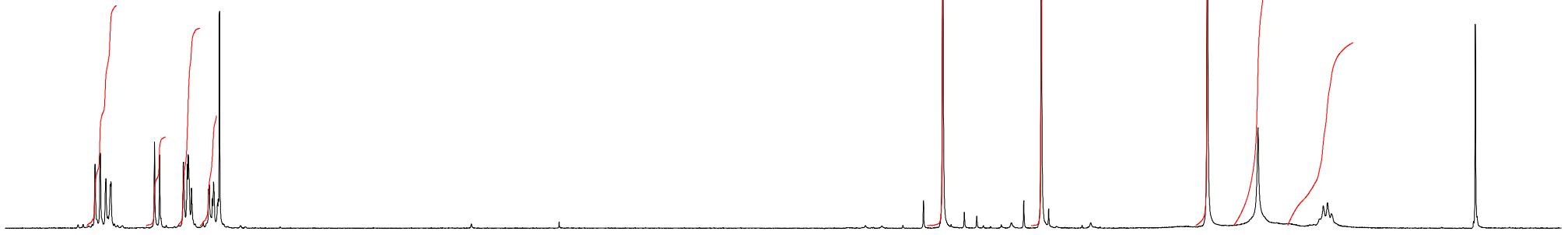
— 3.079  
— 2.510  
— 1.550  
— 1.256  
— -0.000

Current Data Parameters  
NAME mnr20-10  
EXPNO 1  
PROCNO 1

F2 - Acquisition Parameters  
Date\_ 20120105  
Time 8.44  
INSTRUM spect  
PROBHD 5 mm QNP 1H/13  
PULPROG zg  
TD 32768  
SOLVENT CDC13  
NS 8  
DS 0  
SWH 5995.204 Hz  
FIDRES 0.182959 Hz  
AQ 2.7329011 sec  
RG 512  
DW 83.400 usec  
DE 6.50 usec  
TE 299.9 K  
D1 2.26709890 sec  
TD0 1

===== CHANNEL f1 =====  
NUC1 1H  
P1 14.90 usec  
PL1 4.50 dB  
SFO1 300.1318008 MHz

F2 - Processing parameters  
SI 32768  
SF 300.1300068 MHz  
WDW EM  
SSB 0  
LB 0.30 Hz  
GB 0  
PC 1.00



8.0 7.5 7.0 6.5 6.0 5.5 5.0 4.5 4.0 3.5 3.0 2.5 2.0 1.5 1.0 0.5 0.0 ppm

2.20 0.89 1.98 1.10 3.03 3.00 3.55 3.01 1.83